

**Joint
Venture**

Eliminating
family violence
and sexual violence

Budget **2021**

Summary of Initiatives

Family Violence and Sexual Violence Package

Next steps in breaking the cycle
of family violence and sexual violence

Targeted initiatives focus on prevention and community leadership

Budget 2021 includes investment of \$131.9 million over four years in initiatives to help communities to lead whānau-centred, holistic services focused on preventing family violence and sexual violence from happening in the first place, and helping those using violence to stop.

There are three key elements to this year's funding:

- Investing in community-led, whānau-centred services that provide more sustained and holistic support built around families and whānau to heal and strengthen, as well as to respond where they need to
- Providing on-going funding for existing place-based, multi-agency safety responses that provide a solid foundation for developing whānau-centred, integrated, community-led responses to address violence; and
- Strengthening the system response through:
 - significant on-going funding for Māori-Crown partnership arrangements
 - strategic coordination of data and insights to build a learning system; and
 - additional resourcing for the Joint Venture to support delivery of the National Strategy and Action Plans, on which we began engagement last week.

These initiatives are helping to ensure that Māori leadership, Te Ao Māori thinking and an inclusive Te Tiriti framework are key in transforming the family violence and sexual violence system for everyone.

An ongoing commitment that builds year on year

The following Budget 2021 initiatives build on the substantial combined investment already made through Budgets 2018, 2019 and 2020 – a four-year total of over \$660 million.

“The Government is committed to a multi-year approach to reducing and ultimately eliminating family violence and sexual violence. The problem is huge and complex and the solutions are necessarily step-by-step. We have truly committed to having a safer Aotearoa New Zealand for all, and especially women and our tamariki.”

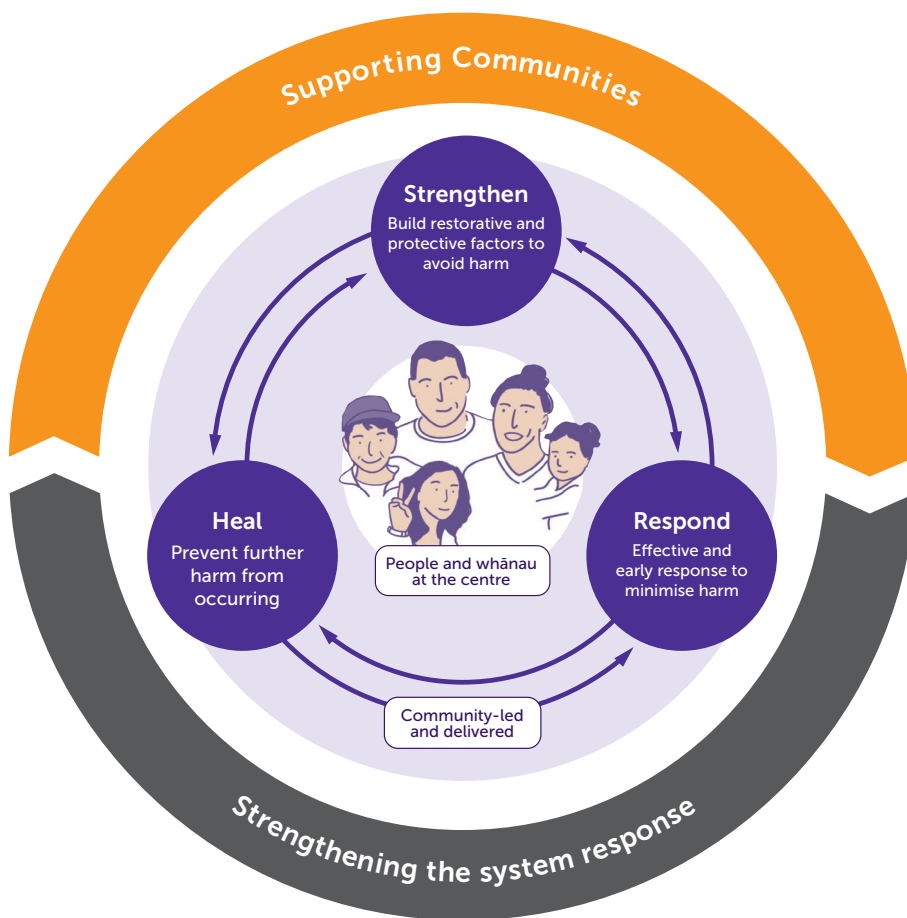
Marama Davidson

Minister for the Prevention of Family and Sexual Violence

Budget 2021: Prevention and community leadership

Safety responses: a foundation for whānau-centred, integrated, community-led responses (\$32.8 million)

\$32.8 million to ensure the ongoing funding of place-based, multi-agency safety responses in two Integrated Safety Response (ISR) sites in Canterbury and Waikato and three Whāngaia Ngā Pā Harakeke (WNPH) sites in Whiria Te Muka (Te Hiku), Tairāwhiti, and Counties Manukau. This funding, for community-based teams, replaces time-limited funding for these critical safety responses. (Vote Police and Vote Health)



Strengthening the system response (\$18.4 million)

\$7.9 million for Māori-Crown partnership arrangements to enable Māori to lead in the transformation of the family violence and sexual violence system. (Vote Justice)

\$9.2 million for additional Joint Venture resourcing for core Joint Venture functions and to support the delivery of the National Strategy and Action Plans. (Vote Justice)

\$1.3 million for strategic coordination of data and insights to build a learning system, including a review of how government contracts family violence and sexual violence research provision to create a collaborative and transformative research agenda. (Vote Justice)

Community-led, whānau-centred family violence and sexual violence services (\$80.7 million)

This funding expands existing family violence and sexual violence services in the community, with a focus on children, whānau, and users of violence.

\$12.0 million to expand whānau-centred facilitation by kaupapa Māori providers to strengthen and restore healthy, safe, and functional whānau relations for whānau experiencing family violence and sexual violence. (Vote Māori Development)

\$8.0 million to work with communities and whānau to support parents and reduce risk in families by extending the successful SKIP (Strategies with Kids, Information for Parents) community prevention programme. (Vote Children)

\$12.2 million to provide access to 24/7 accommodation and wrap-around support services for people using violence, to develop effective strategies to stop using violence and prevent further harm. This initiative provides ongoing funding for existing services in five sites. (Vote Social Development)

\$48.5 million to ensure the ongoing funding of place-based, multi-agency safety responses in two Integrated Safety Response (ISR) sites in Canterbury and Waikato and the Counties Manukau Whāngaia Ngā Pā Harakeke (WNPH). This funding, for continued services and flexi funds, replaces time-limited funding for these critical services. (Vote Police)

Expanding whānau-centred facilitation by kaupapa Māori providers

\$12.0 million (Te Puni Kōkiri)

INITIATIVE

This Joint Venture initiative will enable kaupapa Māori providers to reach more whānau experiencing family violence and sexual violence.

The Whānau-Centred Facilitation (WCF) initiative provides funding to kaupapa Māori providers to help strengthen and restore healthy, safe, and functional relations for these whānau.

Building on current successes, the initiative will extend providers' capacity and capability, and expand the 'contracting for outcomes' approach to new sites/locations through scoping and co-design hui.

BENEFITS/IMPACTS

Whānau outcomes

- Increasing whānau access to and engagement with services and support by connecting whānau in new ways that are locally led
- Establishing, restoring or maintaining whānau links and relationships
- Improved wellbeing for whānau Māori through increased health, safety or improved functioning based on the Whānau Ora Outcomes Framework.

Provider outcomes

- Deliver outcomes that help grow workforce capability and capacity to meet demand, be sustainable and adaptable long term, and protect staff wellbeing
- High-trust contracts enable better relationships with the family violence and sexual violence sector and government agencies
- Progressively adapt services towards greater focus on early intervention and prevention activities.

System outcomes

- Contribute to the evidence base for whānau-centred approaches to service provision
- Contribute to the 'any door is the right door approach' to helping individuals and whānau who experience family violence and sexual violence and providing wrap-around services for broader needs within whānau as part of a larger prevention focus.

Working with communities and whānau to support parents and reduce risk

\$8.0 million (Oranga Tamariki)

INITIATIVE

This initiative extends SKIP (Strategies with Kids, Information for Parents), a successful prevention initiative that supports community-led solutions. SKIP works together with iwi, hapū, community groups, national NGOs and whānau supporters to build community capability and increase protective factors for whānau.

Positive, nurturing early experiences and relationships have a significant impact on child development and are fundamental to preventing family violence. This initiative is based on child development evidence, neuroscience and mātauranga Māori. It is focused on the early years, from conception to school.

Budget 2021 funding increases the SKIP Local Initiative Fund which will:

- provide grants for innovative community-led projects that create lasting change
- increase community capacity and capability through training opportunities for formal and informal whānau supporters
- build a base of evidence into effective community-led prevention.

It's all about communities working together in creative ways, trying new things, building on strengths, encouraging local leadership and collaboration. In doing so, initiatives funded by SKIP support whānau who often don't engage with traditional parenting or support services.

This work is aligned with prevention initiatives across government and with the Child and Youth Wellbeing Strategy, helping to ensure tamariki are loved, safe and nurtured.

BENEFITS/IMPACTS

Through the Budget 2021 funding, SKIP will realise the following outcomes:

- communities are well resourced to lead their own prevention responses
- communities are safe, nurturing environments for whānau and tamariki
- whānau and tamariki are connected to their culture, language, beliefs and identity including whakapapa and tūrangawaewae
- whānau are equipped with positive parenting tools to keep tamariki safe
- seeking and receiving help is encouraged and supported
- whānau are self-determining.

Extending wrap-around services to help people stop using violence

\$12.2 million (Social Development)

INITIATIVE

This initiative aims to improve the effectiveness of Police Safety Orders (PSO) as an intervention tool by providing access to 24/7 accommodation and wrap-around support services for people using violence, working with their whānau and families to develop effective strategies to stop using violence.

This will enable existing services to continue to deliver support for people who use violence at a time when behaviour change is more likely to occur and further harm for victims can be prevented.

The initiative will replace time-limited funding for existing services in five current locations. This funding will allow the continuation of accommodation and wrap-around services in three Auckland sites operated by Gandhi Nivas, an organisation that works with users of family violence, and two Integrated Safety Response sites in Canterbury and Waikato.

Once fully implemented, the initiative will support approximately 900 PSO-bound people using violence each year by 2024/25.

BENEFITS/IMPACTS

- People subject to a PSO have access to a range of supports at the time when they most need it, increasing the likelihood that they will commit to long-term behaviour change
- By temporarily removing people using violence from their homes the risk of immediate violence for potential victims will be reduced, allowing them to stay in their own homes
- A reduction in PSO-bound clients being made temporarily homeless and/or requiring government-funded accommodation
- Fit-for-purpose support available for whānau.

These impacts will lead to longer-term outcomes including:

- Improved safety and wellbeing for people using violence, their victims and whānau
- Reduced family violence offending and related justice sector costs
- Increased family and whānau stability and decreased impact on children, including child poverty.

Sustaining and developing existing safety responses with communities

\$75.4 million (Police) \$5.9 million (Health)

INITIATIVE

This initiative ensures that established multi-agency safety responses will continue beyond 30 June 2021, when their time-limited funding would otherwise have ended. There is funding at \$81.3 million for Integrated Safety Response (ISR) sites in Canterbury and Waikato Districts and Whāngaia Ngā Pā Harakeke (WNPH) sites in Whiria Te Muka (Te Hiku), Tairāwhiti, and Counties Manukau.

Of this, \$48.5 million is for continued community services and flexi funds. The remaining \$32.8 million is for community-based teams, including \$5.865 million for the Ministry of Health to enable continued funding of clinical staff to maintain their involvement in this crisis response work.

WHAT IS ISR?

Integrated Safety Response (ISR) is a multi-agency family violence response designed to ensure the immediate safety of victims and children, and to work with users of violence to prevent further violence.

ISR takes a whole-of-family and whānau approach that puts the risk and needs of family and whānau at the centre.

The operational delivery of ISR is hosted by Police as part of the broader Government work on family violence and sexual violence, through the Joint Venture.

Key features of ISR include dedicated staff, funded specialist services for victims and users of violence, daily risk assessment and triage, family safety plans, an electronic case management system, and an intensive case management approach to collectively work with high-risk families.

WHAT IS WNPH?

Whāngaia Ngā Pā Harakeke (WNPH) is centred on a partnership model. It intends to achieve sustainable change with and for whānau through local partnerships with iwi/Māori to develop shared aspirations responsive to the local environment.

WNPH has developed to be a collective family harm

BENEFITS/IMPACTS

- Moving from time-limited funding to ongoing funding of these multi-agency crisis responses.
- These place-based models and crisis responses provide foundations for the design and success of whānau-centred, integrated, community-led approaches.
- Victims, users of violence, children, families and whānau will continue to receive interventions and assistance based on an appropriate multi-agency risk assessment and triage response.
- ISR will be able to continue:
 - expert multi-agency risk assessment, triage based on appropriate and relevant information sharing;
 - appropriate referrals to, and services from, funded non-governmental organisations (NGOs) based on risk relating to victims, users of violence, families and whānau (ISR and Counties Manukau only) to manage the immediate harm and address underlying issues that lead to violence (thus preventing future violence); and
 - coordinated and coherent responses from appropriate Government agency partners.

response model that includes partnerships with non-governmental organisations, government agencies and communities. Its aim is to achieve sustainable change with and for whānau, by providing culturally appropriate support and interventions to prevent further victimisation/harm and the use of violence. Between 2016 and 2017, three pilot sites were established in Counties Manukau, Tairāwhiti and Whiria Te Muka (Te Hiku).

Building partnerships and collaboration to transform the system

\$7.9 million (Māori-Crown relationship), \$9.2 million (Joint Venture)

INITIATIVE

Stopping family violence and sexual violence requires system transformation. Transformation requires trusting and evolving relationships between government, Māori, communities and the sector; relationships which acknowledge that government has as much to learn as to lead.

This Joint Venture initiative provides funding to enable Māori to partner and lead in the transformation of the family violence and sexual violence system. Tangata Whenua hold a fundamental role in the development of initiatives that prevent and address the drivers of family violence and sexual violence. This initiative provides funding for Tangata Whenua to resource an ongoing relationship with the Crown to prevent and eliminate family violence and sexual violence. It also provides greater resources for the Joint Venture to deliver core Joint Venture functions and support the delivery of the National Strategy and Actions Plans.

BENEFITS/IMPACTS

Māori-Crown relationships

- Tangata Whenua are resourced for an ongoing relationship with the Crown to ensure their voice is loud and clear across the work to eliminate family violence and sexual violence.
- The National Strategy and Action Plans are centred in Te Ao Māori to ensure they deliver for all New Zealanders.
- It is ensured that Māori leadership, Te Ao Māori thinking and an inclusive Te Tiririti framework will play a pivotal part in transforming the family violence and sexual violence system to the benefit of everyone.

Joint Venture

- Additional funding to enable the Joint Venture to more effectively:
 - a. support the Minister and the Government
 - b. deliver a collective work programme, including to give effect to the National Strategy and implement the Action Plans once these are in place; and
 - c. strengthen the cross-agency ways of working as a joint venture with Māori and communities.

Strategic coordination of data and insights to build a learning system

\$1.3 million (Justice)

INITIATIVE

This Joint Venture initiative is part of providing a strategic, coordinated approach to data and insights to underpin the transformative system change that will be required to reduce and ultimately eliminate family violence and sexual violence.

Key to achieving this is an investment in family violence and sexual violence research, including a review of how government contracts this research provision to create a collaborative and transformative research agenda.

BENEFITS/IMPACTS

- Addressing critical research gaps (e.g. sexual violence research, and priorities for Māori researchers), and developing the future research agenda
- A research agenda that will support Te Ao Māori and include the voices of diverse communities
- Reviewing the family violence and sexual violence research provision to develop a collaborative and transformative research agenda
- Fundamentally, having a clearer and agreed understanding of how best to allocate resources, including government funding, to eliminate family violence and sexual violence and the impacts of family violence and sexual violence on people's wellbeing
- Better data and insights will underpin better decisions and directions for the whole system, meaning the right resources and support can be delivered to the right people at the right time in the right way.

Family Violence and Sexual Violence Budget 2021 initiatives by Vote

Budget 2021: Preventing family violence and sexual violence		Vote	2020/21	2021/22	2022/23	2023/24	2024/25	Total
Community-led, whānau-centred family violence and sexual violence services								
Expanding whānau-centred facilitation by kaupapa Māori providers	Māori Development	-	3.000	3.000	3.000	3.000		12.000
Working with communities and whānau to support parents and reduce risk	Oranga Tamariki	-	1.142	1.809	2.402	2.648		8.001
Extending early wrap-around support to help people stop using violence	Social Development	-	2.598	3.207	3.207	3.207		12.219
Safety responses: a foundation for whānau-centred, integrated, community-led responses								
Sustaining and developing existing safety responses with communities	Police	-	18.862	18.905	18.805	18.848		75.420
	Health	-	0.858	1.669	1.669	1.669		5.865
Strengthening the system response								
Building partnerships and collaboration to transform the system	Justice	-	4.276	4.276	4.276	4.276		17.104
Strategic coordination of data and insights to build a learning system	Justice	-	0.241	0.350	0.350	0.350		1.291
BUDGET 2021 OPEX TOTAL			-	30.977	33.216	33.709	33.998	131.900

