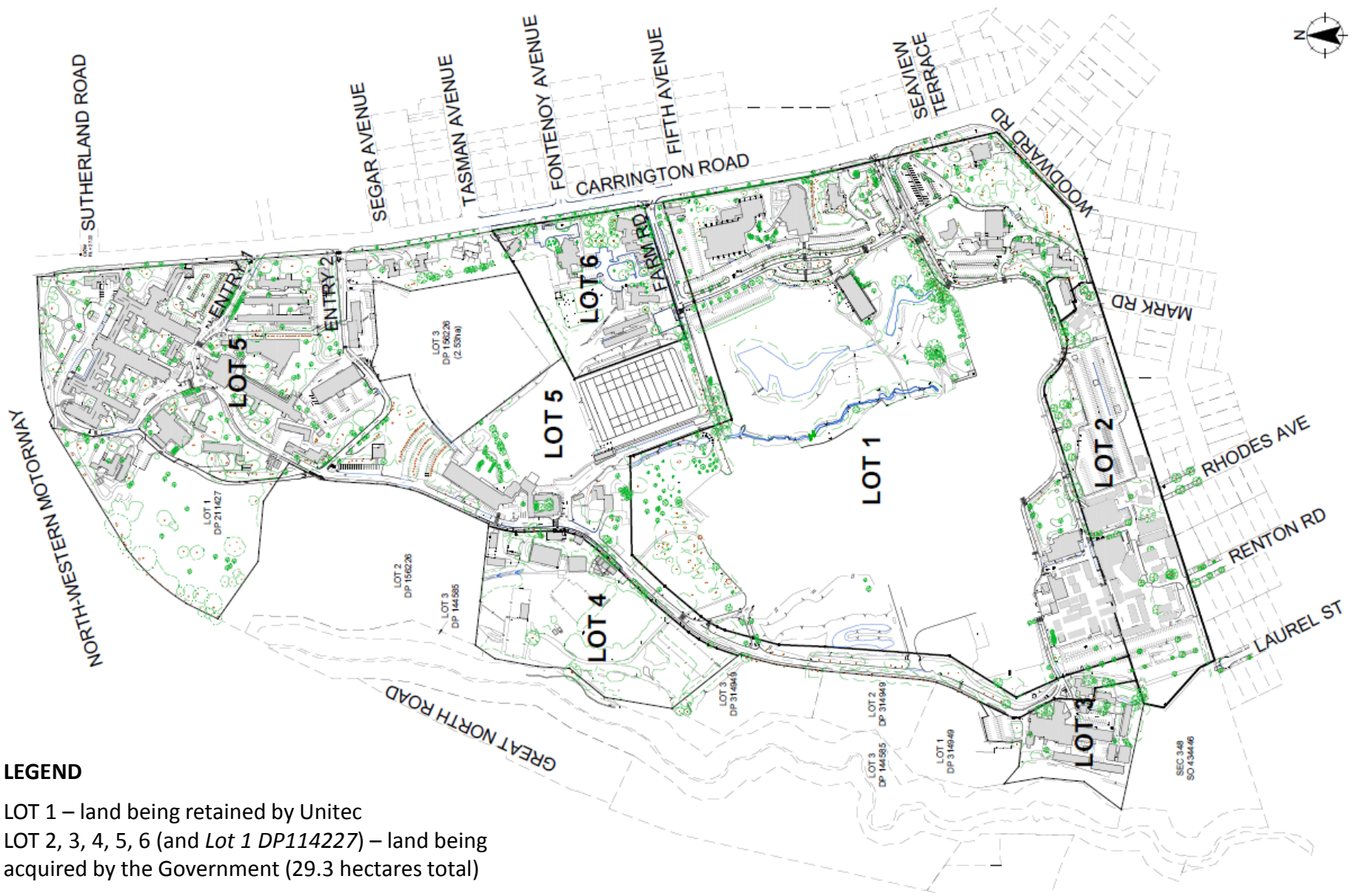


UNITEC TOPOGRAPHICAL SURVEY: SUBDIVISION PLAN



LEGEND

LOT 1 – land being retained by Unitec
 LOT 2, 3, 4, 5, 6 (and Lot 1 DP114227) – land being acquired by the Government (29.3 hectares total)

Further notes:

- Lot 2 DP156226 – Mason Clinic land
- Lot 3 DP 156226 – Private land (Taylor’s Laundry)